

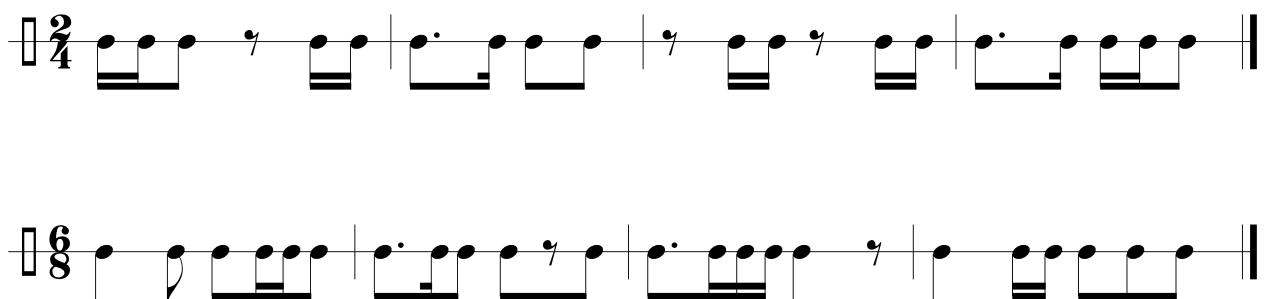
"Liceo Classico e Musicale Statale Bartolomeo Zucchi" - Monza  
Accertamento delle capacità di percezione musicale  
Fac - Simile

Melodia



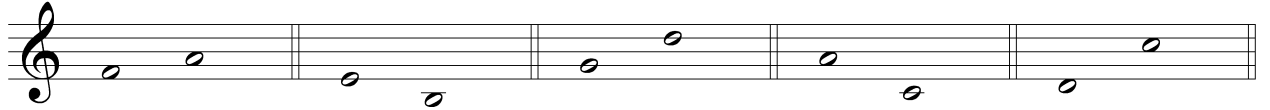
Musical notation for the Melodia exercise, consisting of four staves. The first two staves are in 3/4 time with a key signature of one sharp (F#). The last two staves are in 6/8 time with a key signature of one sharp (F#). The notation includes various note values, rests, and phrasing slurs.

Ritmo

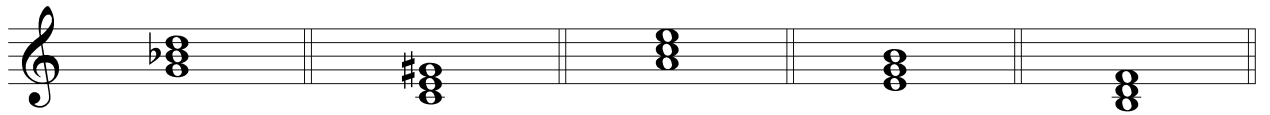


Musical notation for the Ritmo exercise, consisting of two staves. The first staff is in 2/4 time and the second staff is in 6/8 time. The notation uses rhythmic patterns with stems and flags to indicate the timing of notes.

## Intervalli



## Triadi



## Scale

